

MINISTRY OF FINANCE  
DEPARTMENT OF REVENUE

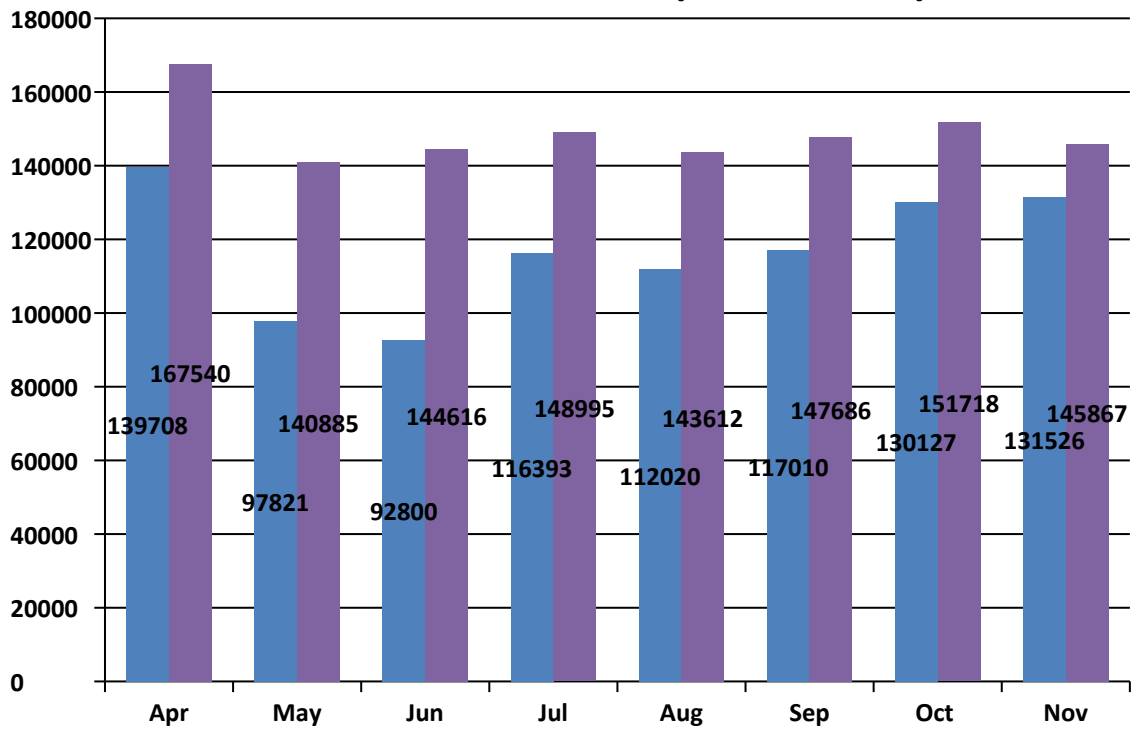
\*\*\*

**PRESS NOTE**

**GST Revenue collection for November 2022 records increase of 11% y-o-y**

1. The gross GST revenue collected in the month of November 2022 is ₹ **1,45,867 crore** of which CGST is ₹ **25,681 crore**, SGST is ₹ **32,651 crore**, IGST is ₹ **77,103 crore** (including ₹ 38,635 crore collected on import of goods) and Cess is ₹ **10,433 crore** (including ₹ 817 crore collected on import of goods)
2. The government has settled ₹ 33,997 crore to CGST and ₹ 28,538 crore to SGST from IGST as regular settlement. The total revenue of Centre and the States after regular settlements in the month of November 2022 is ₹ 59678 crore for CGST and ₹ 61189 crore for the SGST. In addition, Centre had also released Rs. 17,000 crore as GST compensation to States/UTs in November 2022.
3. The revenues for the month of **November 2022 are 11% higher** than the GST revenues in the same month last year, which itself was Rs. 1.31,526 crore. During the month, revenues from import of goods was **20% higher** and the revenues from domestic transaction (including import of services) are **8% higher** than the revenues from these sources during the same month last year.
4. The chart below shows trends in monthly gross GST revenues during the current year. The table shows the state-wise figures of GST collected in each State during the month of November 2022 as compared to November 2021.

## Trends in GST Collection (Rs. In Crore)



## State-wise growth of GST Revenues during November 2022<sup>1</sup>

State	Nov-21	Nov-22	Growth
Jammu and Kashmir	383	430	12%
Himachal Pradesh	762	672	-12%
Punjab	1,845	1,669	-10%
Chandigarh	180	175	-3%
Uttarakhand	1,263	1,280	1%
Haryana	6,016	6,769	13%
Delhi	4,387	4,566	4%
Rajasthan	3,698	3,618	-2%
Uttar Pradesh	6,636	7,254	9%
Bihar	1,030	1,317	28%
Sikkim	207	209	1%
Arunachal Pradesh	40	62	55%
Nagaland	30	34	11%
Manipur	35	50	42%
Mizoram	23	24	3%
Tripura	58	60	3%
Meghalaya	152	162	6%
Assam	992	1,080	9%
West Bengal	4,083	4,371	7%
Jharkhand	2,337	2,551	9%
Odisha	4,136	4,162	1%
Chhattisgarh	2,454	2,448	0%
Madhya Pradesh	2,808	2,890	3%
Gujarat	9,569	9,333	-2%
Daman and Diu	0	0	67%
Dadra and Nagar Haveli	270	304	13%
Maharashtra	18,656	21,611	16%
Karnataka	9,048	10,238	13%
Goa	518	447	-14%
Lakshadweep	2	0	-79%
Kerala	2,129	2,094	-2%
Tamil Nadu	7,795	8,551	10%
Puducherry	172	209	22%
Andaman and Nicobar Islands	24	23	-7%
Telangana	3,931	4,228	8%
Andhra Pradesh	2,750	3,134	14%
Ladakh	13	50	273%
Other Territory	95	184	93%
Center Jurisdiction	180	154	-14%
<b>Grand Total</b>	<b>98,708</b>	<b>1,06,416</b>	<b>8%</b>

<sup>1</sup>Does not include GST on import of goods